

# Product Insight

everest **ims**  
EverestIMS Technologies



**infraonNCCM**  
Powered by EverestIMS

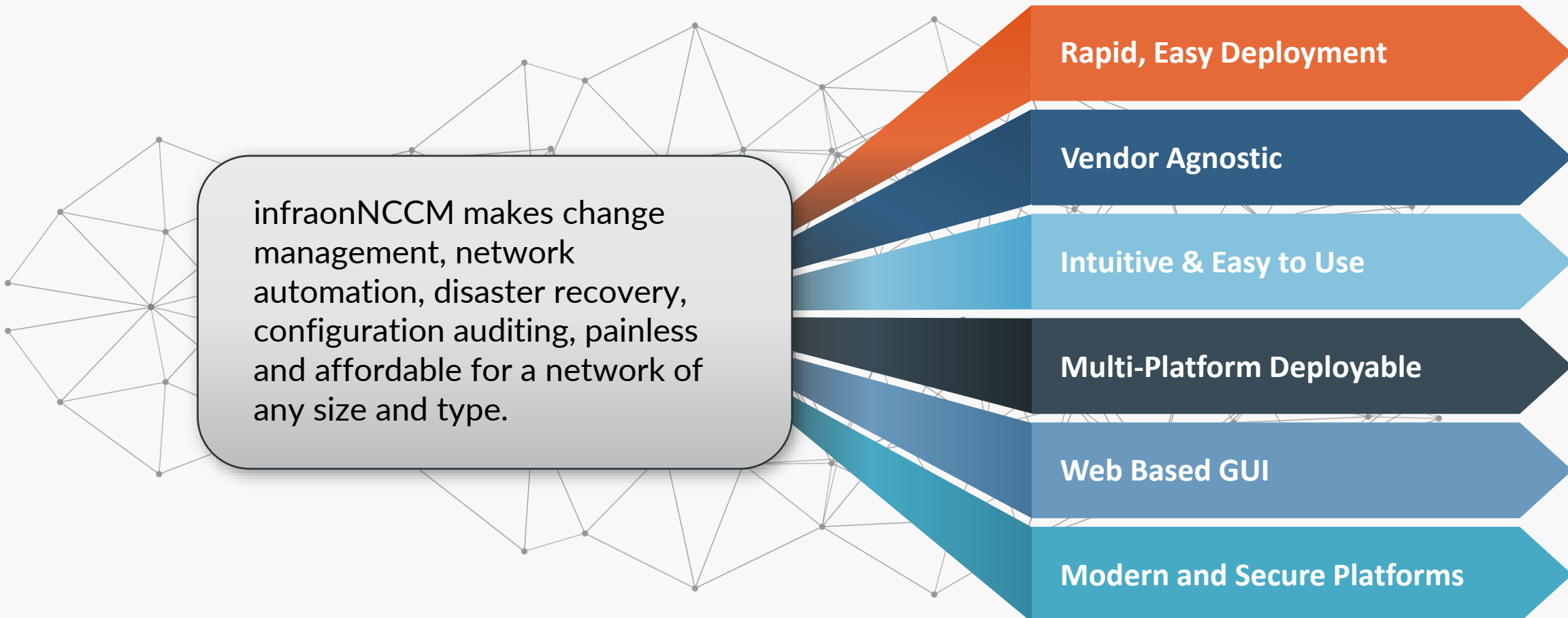
# infraonNCCM - Overview

**Define, Authorize, Deploy and Track Change**  
on any network device...

infraonNCCM (Network  
Configuration and Change Manager)  
automates the Configurations and  
Compliance of network devices



# infraonNCCM – Core USPs



infraonNCCM makes change management, network automation, disaster recovery, configuration auditing, painless and affordable for a network of any size and type.

**Rapid, Easy Deployment**

**Vendor Agnostic**

**Intuitive & Easy to Use**

**Multi-Platform Deployable**

**Web Based GUI**

**Modern and Secure Platforms**

# Vulnerability Management

## Devices Managed



Routers



Switches



Bridges



Firewalls



Load  
Balancers



Wi-Fi Access  
Controllers

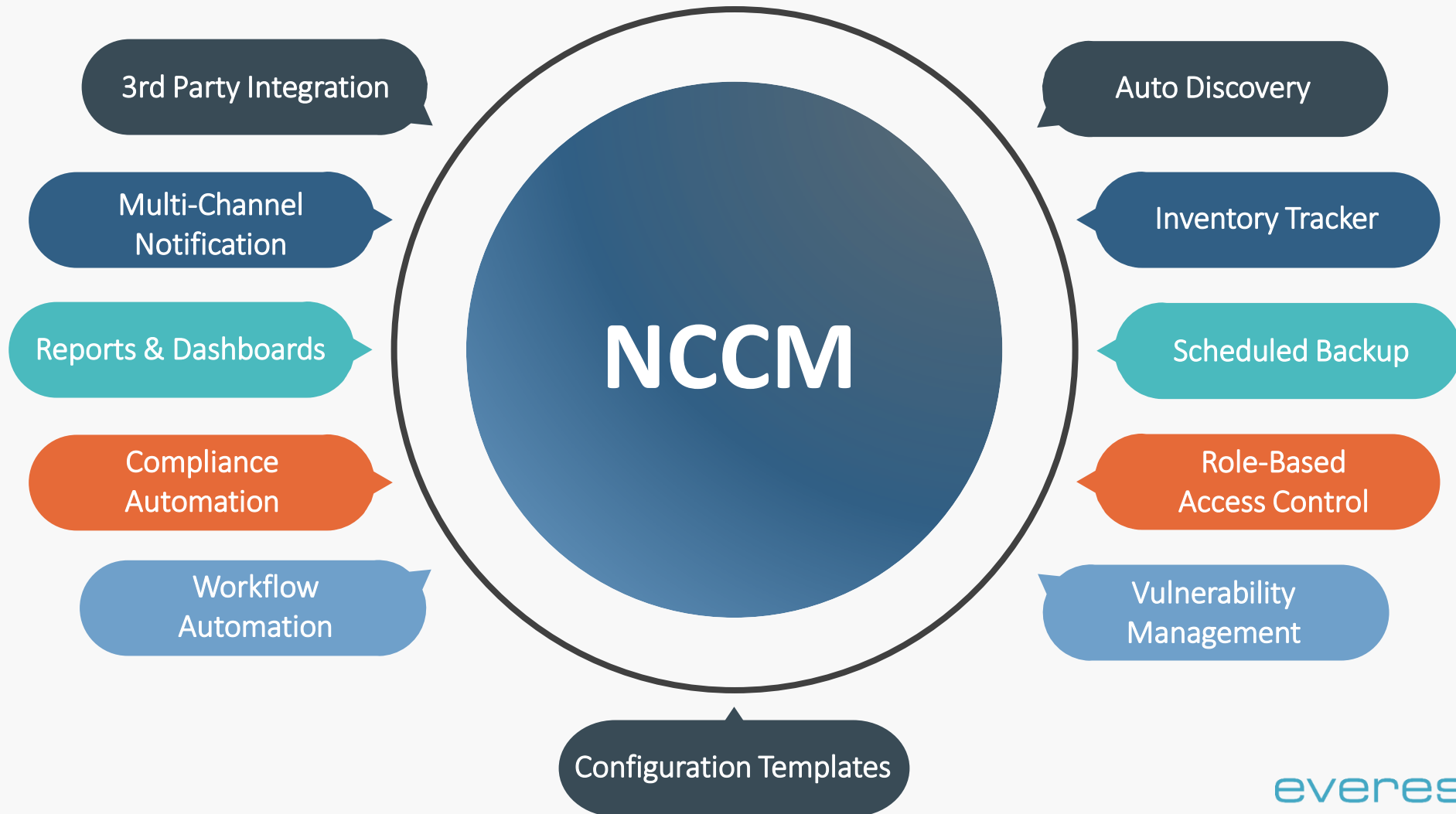
## Network standard configuration protocols used

SSHv1, SSHv2, Telnet, SNMP v2c & v3, PING, SCP, SFTP, TFTP/FTP, NETConf, HTTP REST-API etc.

Manages devices using dual IP stacks IPv4 and IPv6

Scales the management of devices ranging from 5K to 25K from a single management pane.

# NCCM Features



# Auto Discovery

NCCM supports multi mode of discovery including Topology Connections

Discovery from infraonIMS system

Typically required SNMP and device credentials



**IP Scan**

**CSV**

**Scheduled**

**Manual**

**API**

# Inventory Tracker



Maintains Device critical inventories

Vendor name

Device Series

Device Model

Serial Number

End of Life

End of Support

Serial Number

OS Type, Version

Running OS Image file

Flash Size

Memory size

NVRAM size

Configuration Register

Chassis

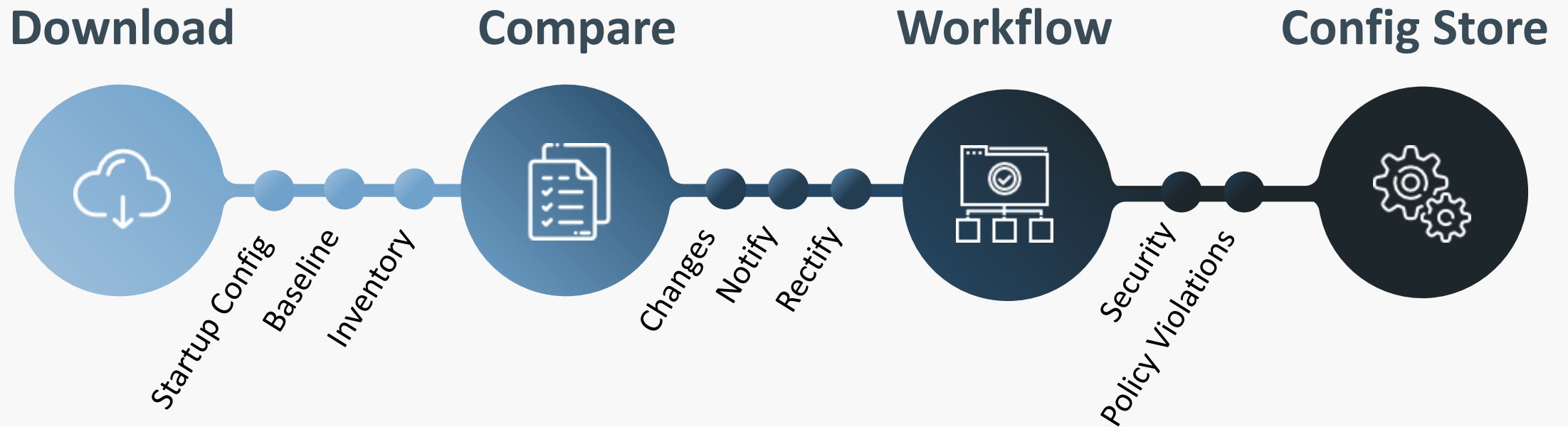
Ports

Fan

Power

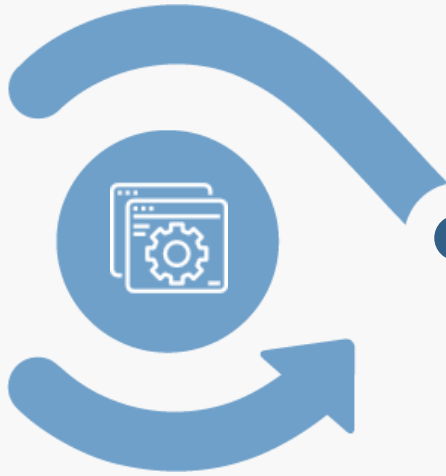
PIC, etc

# Download Process





# Upload Process



**Config Templates**

Test and Review  
ACL  
Zero Touch  
Service Config



**Templates**

Execute  
Merge  
Replace  
Roll Back  
Upgrade



**Workflow**

Audited  
IP Range  
Approval based  
Policy Check  
Failure Remedy



# Workflow Automation – CLI Job& Live Session

Perform audited adhoc configuration changes on devices directly

CLI Job live session view

All CLI JOB's are audited and view available

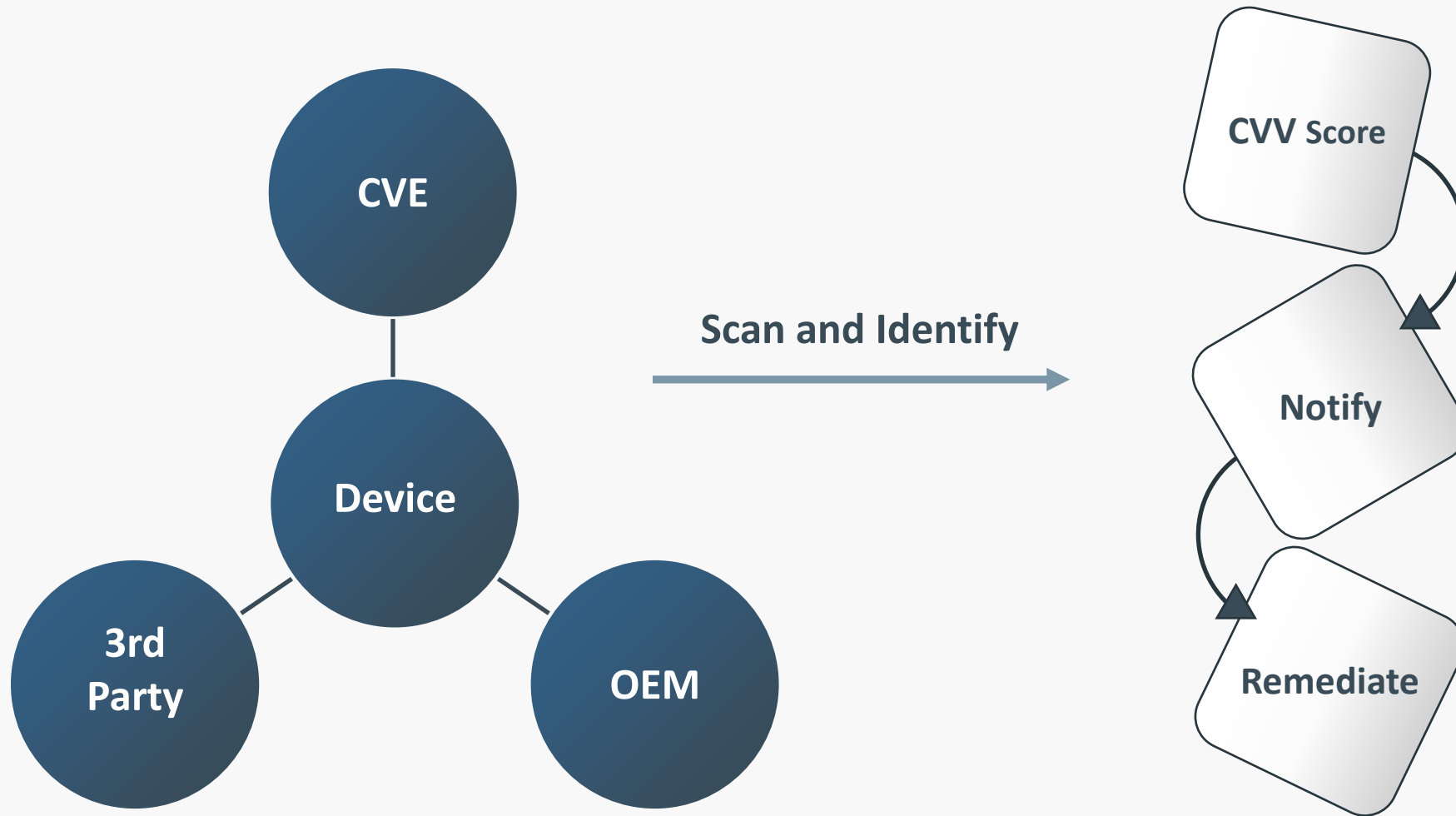
Auto Remediations for policy violations

Approval based or direct config jobs with role-based access

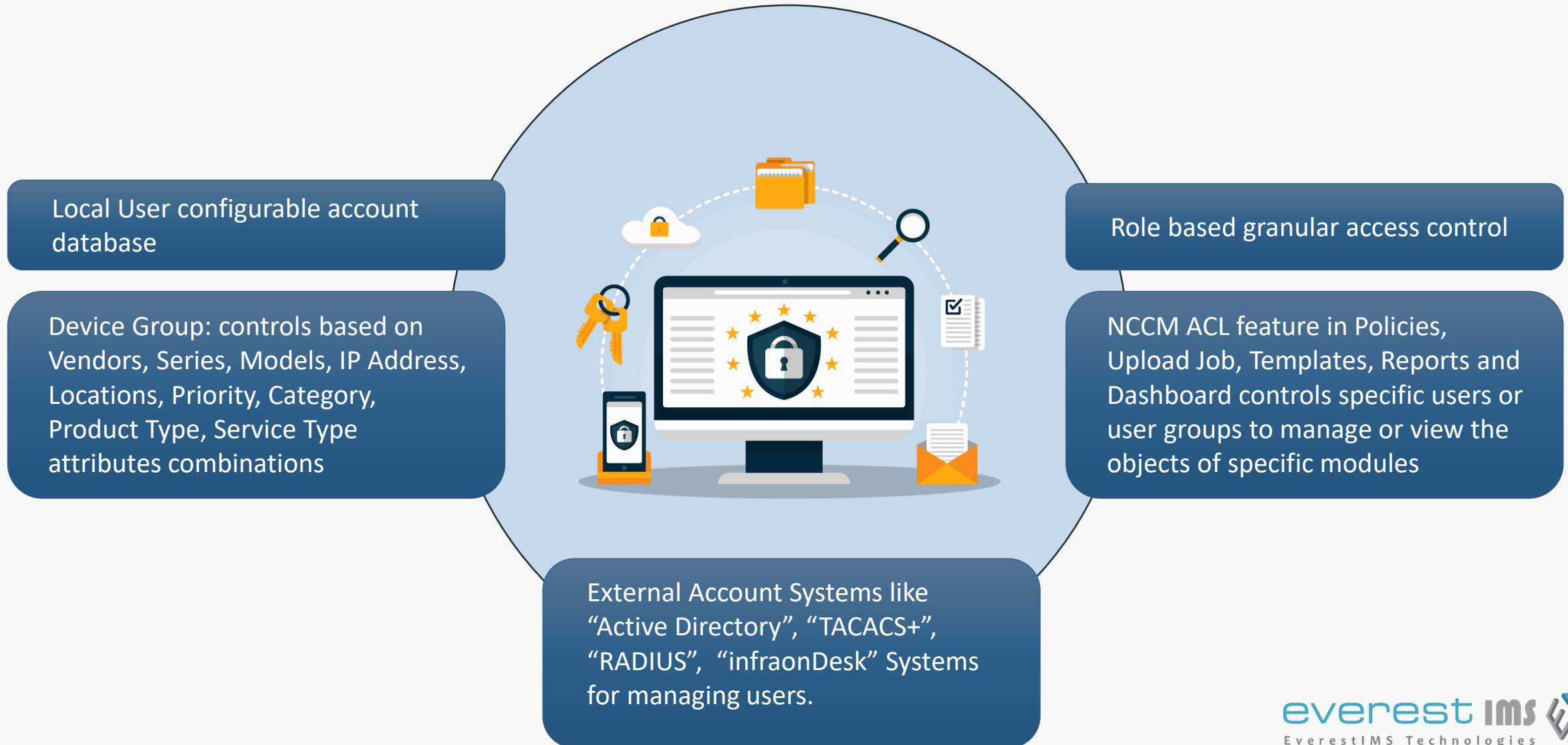
Will only audit the commands executed on devices and will not restrict the commands in case of commands having Policy violations.



# Vulnerability Management



# Accounts & Role-based Access Control



# Compliance Automation

Out of box delivers the following Compliance Policy standards. PCI DSS v3.2, NIST, DISA, Major Vendors Hardening Policies, etc.

Can be customized for other Compliances and Operational Policies

Automatic Policy check before any change in the network.

Any network change (out-of-band change) is detected during the policy check on the next configuration download.

Auto remediation of the violations based on approvals from admins.

Policies shall have multiple rules and rule groups as per compliance and/or golden template.

Policy Execution audits are maintained at device level



# Reports

Offers customizable reporting where users can choose from predefined widgets (50+ no's) and apply filters

## Some Report types

- Audit reports
- Failure report: Backup, non configured
- Download and Upload Job
- Policy Audit and compliance reports
- Inventory Report
- Events Reports
- Task Report
- Device Download Statistics Report
- Device Vulnerability Statistics Report
- And Many More...



# Multi Channel Notification

Any Event detected by the system can be notified to the users.

Different methods are prebuilt.



**SMS**



**Email**

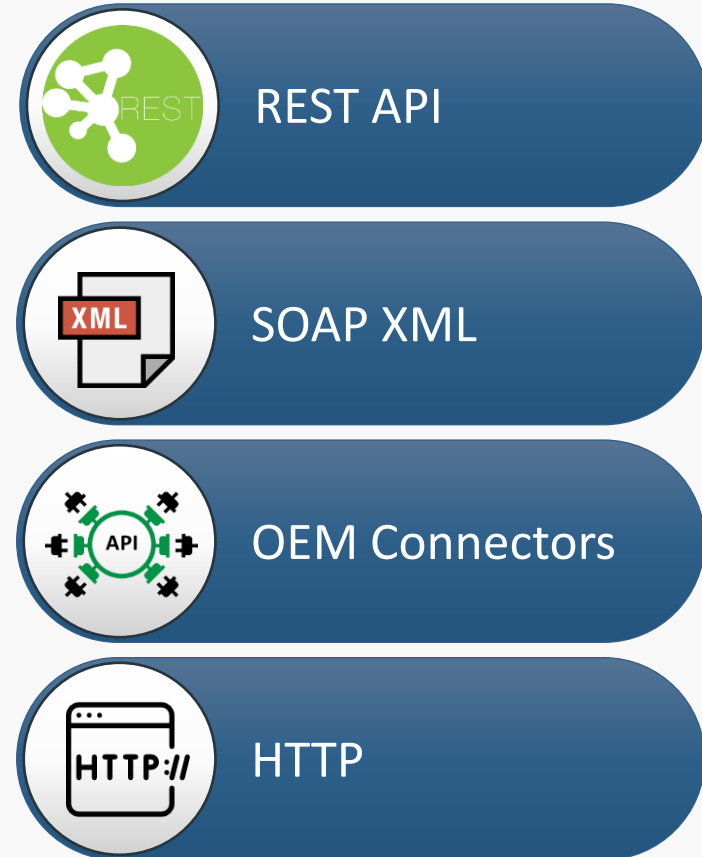


**Syslog**



**HTTP API**

# 3rd Party Integration





# Sample Screen - Login, Device Credentials, Discovery



Network Configuration and Change Management

### Sign In

User Name:

Password:

Start In: Default ▼

[Login](#) [Forgot Password?](#)

Copyright © 2020 EverestIMS Technologies Pvt Ltd. All Rights Reserved.

**Device Credentials**    Compliance    Templates    Jobs    Actions    Audits    Discovery    Configure    Manage

#### Add Device Credential

Profile Name \*

Description

Protocols \* ☐ SNMP ☐ WMI ☐ SSH ☐ TELNET ☐ NETCONF ☐ FTP ☐ SFTP ☐ TFTP ☐ SCP ☐ CORBA ☐ HTTP ☐ Custom

[Ok](#) [Cancel](#)

Active  
Directory

SIEM

### Automatic Discovery

Device IP Address  Format: 192.168.1.1/24 or 192.168.1.1,192.168.1.2 or Hostname ☐ IPv6 Address

Process Prese ▼

Notification Alert Select Notifier ▼

#### Profiles

Device Credential Select Device Credential ▼

Configuration Profile Select Configuration Profile ▼ [View](#)

#### Protocols

Connection Protocol Select Connection Protocol ▼

Configuration Download Protocol Select Download Protocol ▼

OS Image Download Protocol Select OS Image Download Protocol ▼

Inventory Download Protocol Select Inventory Download Protocol ▼

Other Configuration Download Protocol Select Other Configuration Download Protocol ▼

#### Filter Options

Filter By Ping ☒

Timeout (msec)  5000

[Discover](#) [Cancel](#)

# Sample Screen - Inventory

infraonNCCM

Powered by EverestWMS

IP Address

7

16



ADMINISTRATOR

13:50:31 - 18 Mar 2020

Session expires in 00:59:32

Devices

# Sample Screen - Inventory

**Device Information - 192.168.50.27**

Configuration Details

Login Profile :	51_27	Configuration Profile :	Cisco IOS Router	Process :	OS1
Current Running Version :	v2	Last Successful Running Configuration :	Fri Aug-10 10:00	Running Base Line Configuration :	Wed Aug-08 17:20
Current Startup Version :	v1	Last Successful Startup Configuration :	Fri Aug-10 10:00	Startup Base Line Configuration :	Wed Aug-08 17:20
Job Status :	Enabled	Job Last Run Time :	Fri Aug-10 10:00	Job Next Run Time :	Sat Aug-11 10:00
Created By :	administrator	Created At :	2018-08-08 17:20:16		

Inventory Details

Hostname :	rrouter27.Trouter.com	Alias :	rrouter27.Trouter.com	Device Type :	Router
Vendor :	Cisco	Model :	C1900-UNIVERSALK9-M	Series :	Cisco 1900 Series Routers
Operating System :	IOS	OS / Firmware Version :	15.0(1r)M3	Processor :	-
Description :	Cisco IOS Software, C1900 Software (C1900-UNIVERSALK9-M), Version 15.1(3)T, RELEASE SOFTWARE (fc1) Technical Support: http://www.cisco.com/techsupport Copyright (c) 1986-2010 by Cisco Systems, Inc. Compiled Mon 15-Nov-10 21:08 by prod_reli_team				
Base MAC Address :	-				
Serial Number :	FC21404C15W				
Memory Size :	1015776K/32768K bytes	NVRAM Size :	262136 bytes total (244365 bytes free)	Flash Size :	512172032 bytes total (417079296 bytes free)
Disk Size :	-	Mother Board Serial Number :	-	Mother Board Revision Number :	-
Power Supply Part Number :	-	Model Revision Number :	-	Configuration Register :	0x2102
Image File Name :	flash0:c1900-universalk9-mz.SPA.151-3.T.bin	End of Life :	0	End of Support :	0
System Object ID	.1.3.6.1.4.1.9.1.1172				

Additional Properties

Asset ID :	-	Owner :	-	Address :	-
Country :	-	Region :	-	State :	-
City :	-	Location :	-	Priority :	-
Domain :	-	Product Type :	-	Service Type :	-

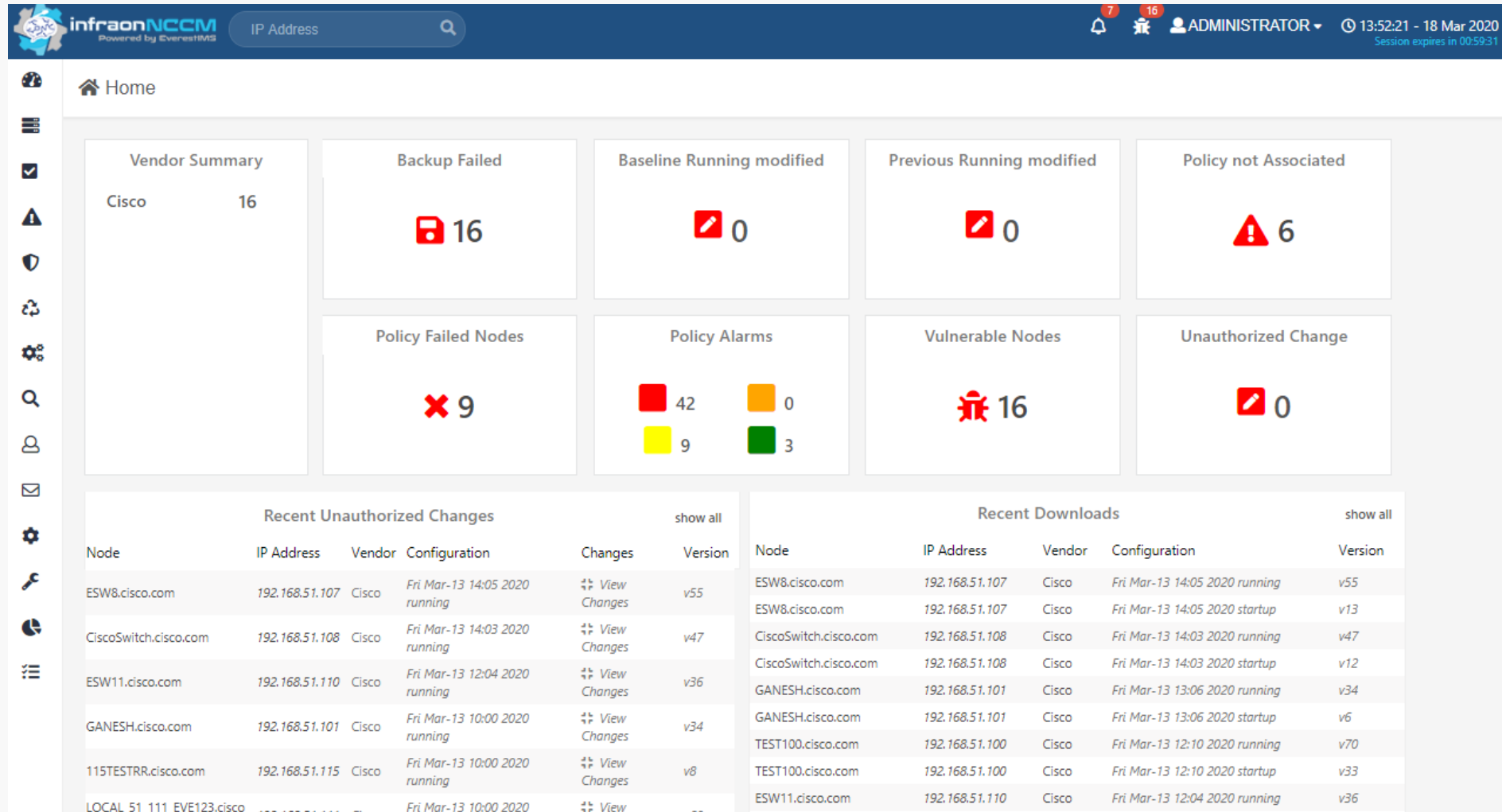
# Sample Screen - Inventory

<u>Location Information</u>	
Latitude	Longitude
Operational Data	
Inventory Data	
Events	
Baseline Startup Configuration	
Baseline Running Configuration	
Current Startup Configuration	
Current Running Configuration	
Baseline Running Vs Current Running Configuration	
Baseline Startup Vs Current Startup Configuration	
Startup Vs Running Configuration	
Other Configurations	

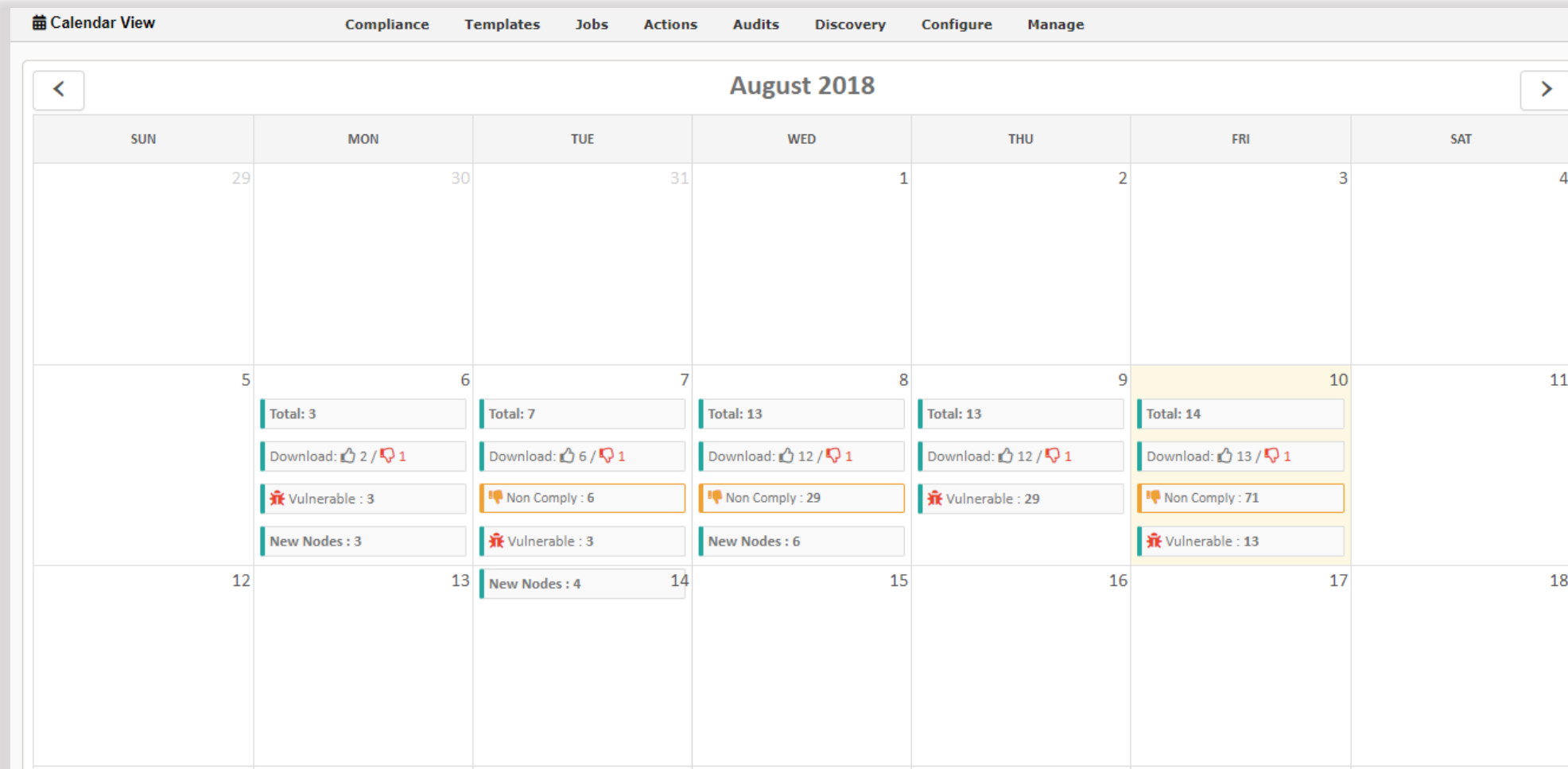
# Sample Screen - Inventory

Operational Data														
Interfaces														
Interface Name	Is Enabled	Is Up	Description	MAC Address	IP Address	Speed	Tx Unicast Packets	Rx Unicast Packets	Tx Octets	Rx Octets	Tx Discards	Rx Discards	Tx Errors	Rx Errors
Loopback300	True	True	-	-	-	8000	0	0	0	0	0	0	0	0
Loopback4	True	True	-	-	-	8000	0	0	0	0	0	0	0	0
Loopback5	True	True	-	-	-	8000	0	0	0	0	0	0	0	0
GigabitEthernet0/1	True	True	-	00:26:99:C7:67:41	ipv4: 192.168.50.27/24 ipv6: FE80::226:99FF:FEC7:6741/10 ipv6: 2003:ABCD:1234:1:226:99FF:FEC7:6741/64	100	6852081	51046441	3256905416	3990128358	1	0	0	0
GigabitEthernet0/0	True	False	-	00:26:99:C7:67:40	ipv4: 10.0.0.1/8	1000	0	0	0	0	0	0	0	0
Loopback3	True	True	-	-	-	8000	0	0	0	0	0	0	0	0
Environment														
Route														
ARP Table														
MAC Table														
Firewall Policies														
LLDP Neighbors														
BGP Neighbors														
Users														
Inventory Data														
Events														

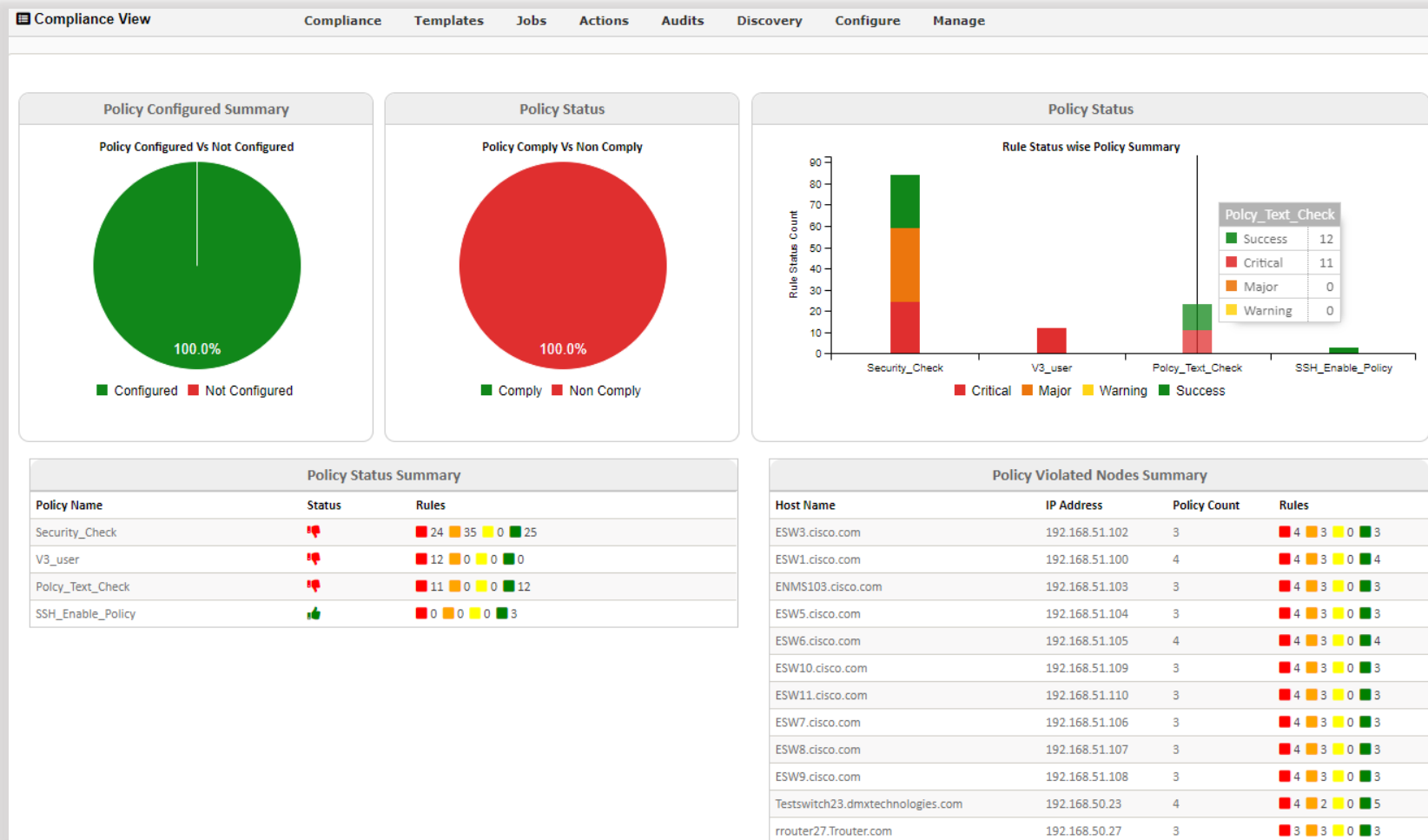
# Sample Screen - Dashboard



# Sample Screen – Calendar Dashboard



# Sample Screen – Calendar Dashboard







**Take Action Now**

[www.everest-ims.com](http://www.everest-ims.com)

[sales@everest-ims.com](mailto:sales@everest-ims.com)

+91 80 46567100