



DATASHEET

Unified Availability and Performance Management of your heterogeneous digital infrastructure with advanced forecasting, root-cause analysis and business process analysis.

**A flagship product of
EverestIMS Technologies Pvt Ltd**



www.everestims.com

An all-in-one OSS solution when Integrated with Infraon Desk, an IT Service Management tool and Infraon NCCM a Network Operations Automation Tool.

- Web based GUI for easy access with no client installations required
- FCAPS based Monitoring & Management
- Centralized NoC Operations Support as per eTOM guidelines
- Agent less deployments using standard protocols
- Easy adaptation to new devices / applications
- Centralized and remote secured access
- Open source environment supported deployment
- Multi Browser support spanning Chrome, Firefox, Safari, Opera, Microsoft Edge

Modular and Distributed architecture

- Multi-level distribution support with local and centralized access
- Secure data transfer between remote and central servers
- Scalable solution with multi location expansion
- No cost for remote probes.

Feature List

Fault Management

- Immediate fault detection via polling & traps
- Multi-level severity with color-coded display
- Adaptable multi-level Thresholds
- Custom messages for each alarm type
- Multi-mode notification with escalation
- In-built auto-correlation mechanism for RCA
- Hold-time support to neglect false alerts
- Instant diagnosis options with auto correction triggering
- Status propagation to all levels of network
- Syslog management with extensive filtering and alerting
- Auto intelligent NOC operation view
- Rule Engine driven alarm generation based on Event type, RepeatCount, Device properties like Group / Type / Location / Service / Topology,
- Individual and Grouped alerts with custom message
- Service alerts based on rules
- AI Enabled Proactive Fault Management

Asset and Inventor Management

- Complete IP/ Non IP Assets Monitoring
- Consolidated node view for Performance & Inventory data
- AMC tracking of all assets
- Audit reports for complete network
- Software Management , License Management

Traffic Flow Analytics

- All flow types: Netflow, S-Flow, J-Flow, C-Flow, IPFIX, Netstream etc.
- Packet Capture based flow analysis.
- Congestion Detection via User-based, Application-based traffic analysis
- Top Applications
- Top Links / Hosts / Destinations
- Top Protocols, etc.

Flexible & Customizable Reports

- Highly Informational pre-configured reports
- Strong, fully configurable, reporting module
- Option of generating multiple reports in parallel for comparison and analysis
- User specific access to reports
- Scheduled automatic reports sent directly by the system
- Copy Report feature or quick reports creation based on existing report definitions Real-time Report support for specific analysis
- Multiple graph support (Trend, Bar, Pie, Area etc.)
- Top-N & Summary Reports – both Time-wise & Site-wise
- ML based prediction report to support Capacity Planning
- Export to multiple formats like PDF, Excel, CSV etc.

Performance Management

- Multi-aspect performance tracking for proactive management
 - Network performance
 - System performance
 - Server performance
 - Application performance
 - Quality of Service
- Maintenance of historical data for in-depth analysis
- Flexible dashboards for multi-angle information
- Multilevel data aggregation of network
- Extensive performance-based reports
- SLA Tracking with Alerts and Escalation Support

Feature List

Customizable Dashboards



- Configurable dashboards
- All dashboards support role based access
- Wide variety of Widgets to define personalized Dashboards based on access privileges
- Visualization of data across Inventory, Fault, Performance, SLA and Map segments
- Copy Dashboard feature allows for quick Dashboard creation based on existing dashboard configurations

Views



- Dashboard
- Maps
- SVG Maps
- Topology / Flat view
- Geo Maps
- Network diagram as a service
- Alarm Dashboard
- Resources View
- Cross Launch of Service Desk with relevant ticket information for individual Alarms
- Events / Traps / Syslogs
- Node view
- Rack / Device Back Panel

Notification & Escalation



- Multi-mode notification
- Rule based alerts
- SMS, e-mail, batch, syslog,
- SNMP trap, beeper, XML, etc.
- Multi-level escalation support
- Support for bulk notifications by grouping based on:
- Time periods
- Nodes / Devices

VOIP



- Voice gateway, Media server, call manager Monitoring etc...
- Cisco, Avaya, Polycom etc

Virtualization



- Hyper-V, VMWare, KVM, Xen-Server, Nutanix
- Base server, VM's, storage, cluster, VM movements etc

Configuration Management



- Scheduled Backup of Device Configurations
- Download both startup and running configuration
- Configuration change comparison with color-coded highlighting
- Comparison of configurations across devices / versions
- Baseline tagging of stable configurations
- Notifications on configuration changes
- Option to upload configurations
- Reports

Personalized Accounts & Role Management



- Password Change
- Group edit resource and threshold settings
- User Preferences
- User Groups
- Logged in users
- Support for Active Directory sync

User Management



- Password Policy
- Multiple Account Types
- External Directory Integration like Microsoft AD, TACACS+, Radius
- RBAC – Role Based Access Control

Cloud



- AWS, Azure
 - Cloud Services Monitoring
 - Virtual Machine
 - Storage, Database
 - Microservices
 - Pricing Report
- Google Cloud
- Cloud Capacity Monitoring

SDN

- Monitoring of SDN Infrastructure
- SDN Traffic Monitoring

Wi-Fi

- Access controller, Access Point monitoring
- Performance, Fault, user and traffic monitoring



Core Feature Details

Robust Discovery of Resources



- Topology Discovery – L2, L3 and Optical
- Scheduled Automatic Discovery
- CSV based Bulk Discovery with Custom field support
- Support for wide range of Protocols such as SNMP v1,v2c, and v3, WMI, NetFlow, CORBA, REST API, XML, TMF 814, Syslog, SSH, HTTP, HTTPS, FTP, Telnet, SMTP, POP3, Trace Route, PING, LLDP, CDP, NDP, Spanning Tree, Cisco IPSLA, Modbus, BACnet, Serial Communications, TL1 etc.
- VM Discovery
- Application Discovery
- Business / Non-Business Hours / Maintenance definition
- Flexible Polling control on frequency / schedule / nodes
- Unrestricted tagging and grouping of nodes / devices
- Service to Node to Resource / Component mapping

Self-Monitoring Capability



- Infraon IMS health check
- Infraon license usage tracking
- Resource Details for Infraon IMS load monitoring
- Process Details provides Infraon IMS instance details
- Thread Status view to monitor internal threads
- Infraon IMS Parameters for UI-based application tuning
- Database Status to view Infraon IMS DB information

Flexible Integration Fabric



- RestAPI
- SNMP Trap and Messaging Queue
- XML, CORBA,

Flexible Deployment Architecture



- Single or multiple server deployments
- Modular and Distributed architecture ideal for rapid deployment and high scalability
- MSP architecture with inbuilt replication to aid RIMS-based monitoring
- Secure, centralized and local access
- Secure data transfer between remote and central servers



Comprehensive Security



- Encrypted password using one-way hash algorithm (SHA256)
- Role-based access Privileges
- AES / DES encryption
- Radius / TACACS Integration support
- HTTPS + TLSv2 based Access
- Secured way of Monitoring using SNMPv3, SSH

Data Management



- Flexible data purging thresholds
- Database Backup and Restore

Help



- Online Help
- Tech Support Contact

Multi-Browser



- Chrome
- Firefox
- Edge
- Safari
- Opera

Enhanced File Format Support



- PDF Export
- Doc Export
- CSV Export
- Excel Export

User Friendly Tools

PING

SSH

SNMP WALK

SNMP SET

TELNET

TRACE ROUTE

MIB BROWSER

Key Performance Statistics

CPU Utilization

Memory
Utilization

Disk Usage

Bandwidth
UsageNetwork
Throughput

Jitter

Latency

Packet Loss

CRC Errors

Buffer
Overflow

Voltage

Temperature

Current

Tx Optical
PowerRx Optical
PowerEmail
Response TimeFTP Response
TimeWeb Response
TimeDNS Response
TimeDB Table
Space

Cache Usage

Tunnel-
specific
parameters

Thread counts

Concurrent
connectionsActive
Sessions

etc.



Infraon IMS Supports the Following

Network Technologies

WiFi | IP/MPLS | Metro Ethernet | DWDM | GPON | SDH | ASON | FTTH | VSAT | RF | IOT
SDN, Cloud, Virtualization, Datacenter Network, Utility Network



Network Devices

Cisco | Juniper | Huawei | 3Com | HP | Dlink | EdgeCore | ZTE | CheckPoint | Mikrotik | Brocade |
Avaya | Foundry | Alcatel Routers | Network Printers | Power Backup devices | Broadcom |
BDCOM | Cyberoam | Palo Alto | Avaya | Polycom and any SNMP supported devices



Protocols

SNMP v1, v2c, and v3 | WMI | NetFlow | CORBA | REST API | XML TMF 814 | Syslog | SSH |
HTTP | HTTPS | FTP | Telnet | SMTP | POP3 | Trace Route | PING | LLDP | CDP | NDP | Spanning
Tree | Cisco IPSLA | Modbus | BACnet | Serial Communications | TL1, etc., IPV4 and IPV6 support.



Servers

Windows | Unix | Linux | Solaris | IBM AIX | Ubuntu | RedHat | CentOS | SuSE | Debian



Services

DNS | IMAP2 | NTP | SMTP | JBoss | HTTP | HTTPS | POP | NNTP | SNMP | FTP | NFS |
Radius | SSH | Oracle | Syslog | ICMP



Hypervisors

VMWare ESXi | vCenter | Xen Server | Nutanix | Hyper-V | KVM



Applications

.Net | MSSQL | MS Exchange | IIS | Tomcat | SharePoint | MySQL, Oracle, PostgreSQL,
GlassFish



Device Types

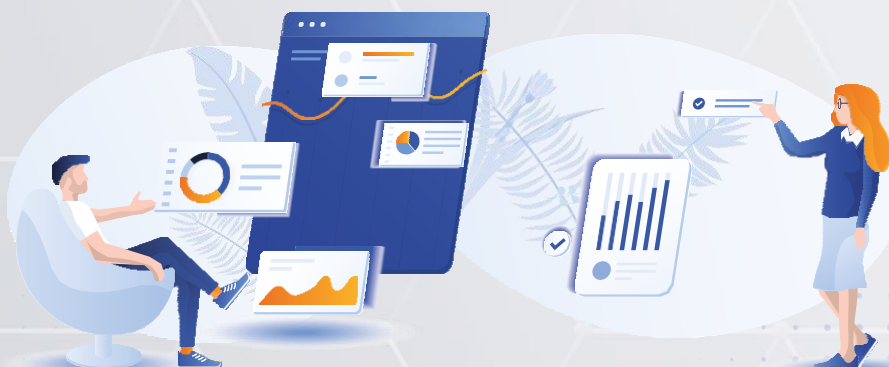
Server | Routers | Switches | Firewall | Load Balancer |
SAN | Cluster | Access Controller | Access Point | OLT | ONT | UPS | Power Rectifiers |
SMPS | Smart Server Racks





- Top few default views that comes with standard package

- ✓ Standard Node View
- ✓ Live Map View with core region View
- ✓ Geo-Map View with node locator
- ✓ Network View
- ✓ Topology View
- ✓ Device Back Panel View
- ✓ Hop-Connectivity View
- ✓ Device Neighbor View



Licensing

Infraon IMS has a simple device-based licensing model wherein the cost of monitoring a single router, switch, firewall or server is the same. The base pack includes fault & performance monitoring of devices bundled with topology mapping, reports, dashboards and notifications. Users also have the option to purchase certain add-on modules for additional features including Network Device Configuration Management, Application & Database Monitoring, Syslog Monitoring, Traffic Flow Monitoring, etc.

MODULE NAME	BASE PACKAGE	ADD-ON LICENSE
Topology Discovery	✓	
WMI, SNMP, SSH Monitoring	✓	
Performance Scan	✓	
Alarms & Notifications	✓	
Reports & Dashboards	✓	
Live & Static Maps	✓	
Business Specific Views	✓	
Network Diagram	✓	
SLA Management	✓	
Basic Inventory Management	✓	
Syslog Monitoring		✓
Application Monitoring		✓
Database Monitoring		✓
Virtualization Monitoring		✓
QoS Monitoring		✓
Configuration Management		✓
Traffic-flow Monitoring		✓
WiFi Monitoring		✓
CCTV Monitoring		✓

Minimum System Requirements

(for VM as well as Physical Server)

CPU	Quad Core 2 GHz or 2vCPU
Memory	4 GB
Hard Drive	20 GB
OS	CentOS 7 and above

*** Please contact our Pre-Sales team to get the exact specifications for your POC / Deployment ***



EverestIMS Technologies India Pvt Ltd (Everest), is an Indian product company. With a rich market experience in the I&O space, the company has built a widespread presence across the country through its product portfolio. Having a mixed team of industry veterans in its management board, the company's vision is to satisfy the dynamic requirements of varied organizations by providing them with modern-day tech-savvy IT tools, and to become an efficient enabler in the digital ecosystem. The organization specializes in providing integrated IT solutions to empower corporations and enterprises for the delivery of enhanced services to their end-users.

Here, at EverestIMS we believe in making innovative solutions matching the latest technology trends. At the same time mould the existing products with superior tech practices so that we are able to provide top-class end user experience to all our clients.

The young team of EverestIMS takes pride in building technology-driven industry standard products to provide a solution truly tailor-made for your business. EverestIMS Software solutions are being used by customers across BFSI, Telecom, ISP, Government, Defense, Manufacturing, HealthCare and Hospitality verticals with deployments of 1 Lakh nodes and beyond.

Contact Us

Bangalore

No. 14, Axis One 4, 3rd Floor,
15th Cross, 100 Feet Ring Rd, JP
Nagar 4th Phase, Bangalore –
560078, Karnataka, India


Tel: +91 80 46567100

Mumbai


108, 1st floor, Bldg. 2(A-3),
The Millennium Business Park,
Mahape, Navi Mumbai-400710

Tel: +91 22 41270170

For additional information

 +91-80-46567148

 marketing@everest-ims.com

 www.everestims.com